

# A TOP DESIGN FROM DIK GEURTS FLEXIBILITY OF INSTALLATION WITH MANY POSSIBILITIES.

- ▶ Contemporary Dutch design
- ▶ Wood stoves and inserts with impressive flame pictures and high efficiency
- ▶ Very easy to operate with just a single air slide
- ▶ Approved in accordance with the most stringent requirements

Exclusive designs

**Odin<sup>EA</sup> / Odin Tunnel<sup>EA</sup>**

DRU has made two additions to the Dik Geurts wood stove range. Odin and Odin Tunnel are dramatic circular stoves with clever design features, which allow them to be installed in many locations.

For instance, the tunnel model, with a door on both sides can be located between the living room and kitchen.

**Odin<sup>EA</sup> / Odin Tunnel<sup>EA</sup>**

- ▶ Elegant design with circular glass window
- ▶ Wall mounted, free-hanging or standing on a plateau
- ▶ Very easy to operate with just a single air slide
- ▶ Coated in dark anthracite with a vermiculite interior
- ▶ Approved in accordance with the most stringent requirements
- ▶ Heat output 5-10 kW

**General accessories:**

- ▶ Ashtray
- ▶ External air kit
- ▶ Floor plates in steel, colour dark anthracite:
  - ▶ Circular design Ø 100 cm and Ø 120 cm
  - ▶ Round with straight edge, Ø 85 cm



AVAILABLE IN APRIL (ODIN TUNNEL<sup>EA</sup>)  
AND JUNE (ODIN<sup>EA</sup>)

Odin Plateau<sup>EA</sup>

# WIDE CHOICE OF STOVE INSTALLATION OPTIONS



### Odin Plateau<sup>EA</sup> and Odin Tunnel Plateau<sup>EA</sup> (for standing on a plateau):

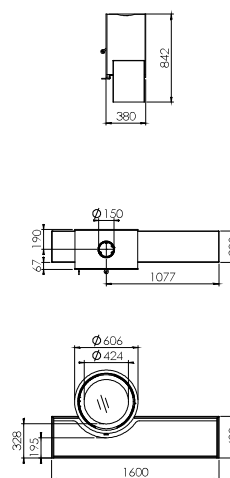
- ▶ Plateau included, size: 160x30x40 cm (wxdxh)
- ▶ Plateau can be customised to your requirements

### Odin Fixed<sup>EA</sup> and Odin Tunnel Fixed<sup>EA</sup> (for hanging on the wall):

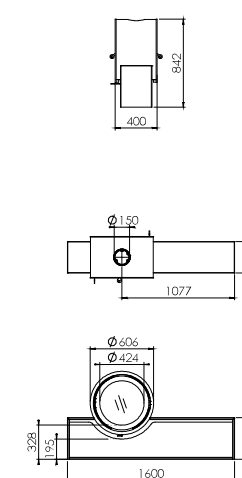
- ▶ Includes hanging kit / fixed pipe (custom, max. 190 cm)
- ▶ Accessory: telescopic decorative air inlet pipe outside terminal (30-55 cm)

### Odin Wall<sup>EA</sup> (wall mounted):

- ▶ Fixing kit included
- ▶ Accessories: telescopic decorative air inlet pipe outside terminal (30-55 cm), external air connection kit



Odin Plateau<sup>EA</sup>



Odin Tunnel Plateau<sup>EA</sup>

Odin Tunnel  
Fixed<sup>EA</sup>



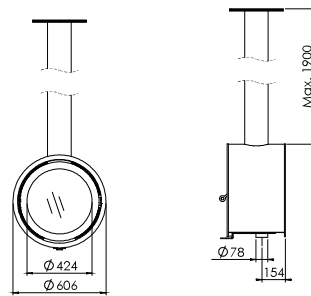
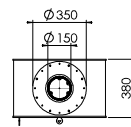
With external  
connection



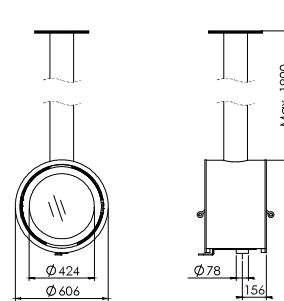
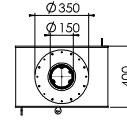
Odin wall<sup>EA</sup>  
Straight



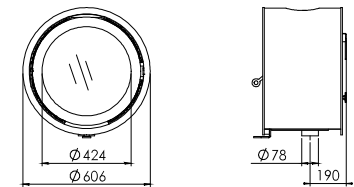
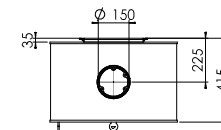
Very easy to operate with just  
a single air slide



Odin Fixed<sup>EA</sup>



Odin Tunnel Fixed<sup>EA</sup>



Odin Wall<sup>EA</sup>